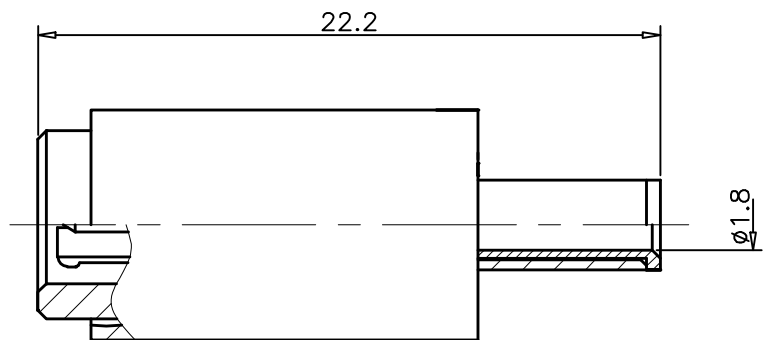


1		2		3		4	
RevNo	Revision note			Date	Signature	Checked	
00	Sketch Only			5/7/14	Teresa	Simon	



Interface Per: MIL-STD-348, IEC 60169-29

Material & Finishing:

1. Center condutor: Brass, Gold Plating
2. Insulators: PTFE
3. Spring Loaded Contacts: Beryllium Copper
4. Ferrule: Copper, Nickel Plating
5. Body & Other Metal: Brass, Nickel Plating

RoHS Compliant.

ALL DIMENSIONS ARE IN MILLIMETERS AND [INCHES]

KERUI ELECTRONIC CO;LTD

THESE DRAWING & SPEC. ARE THE PROPERTY OF KERUI ELECTRONIC CO;LTD AND SHALL NOT BE REPRODUCED, OR COPIED OR USED AS THE BASIS FOR THE MANUFACTURE OR SALE OF APPARATUS OR DEVICES WITHOUT THEIR EXPRESS WRITTEN CONSENT.

UNLESS OTHERWISE NOTED  
ALL SURFACES FINISHED TO 64/MAX.

ALL TOLERANCES ARE:	DECIMALS	FRACTIONS	ANGLES
x ± 1.0	±1/64	x' ± 1°	
x.x ± 0.5		x'x' ± 0.5°	
x.xx ± 0.1			

Title

1.0-2.3 75ohm male  
crimp for SFYE-75-2-1x8

Drawn by  
Teresa

Ckd by  
Simon

Appd by  
Richard

Date  
5/7/2014

Scale  
2.5:1

Sheet 1 of 1

40 0111 109 01